

# BBS & MS1429

Joris van Zwieten

Ronald Nijboer

# Context

- CS1, CS8, CS16: each 4 micro-stations of 1 dipole
- CS10: 48 dipole micro-station, 24, 12, 6 (all 4 at same physical location)
- CS10 has a 48 times higher gain than other dipole micro-stations
- CS10 has a far smaller beam ( $\sim 5$  deg @ 60 MHz)

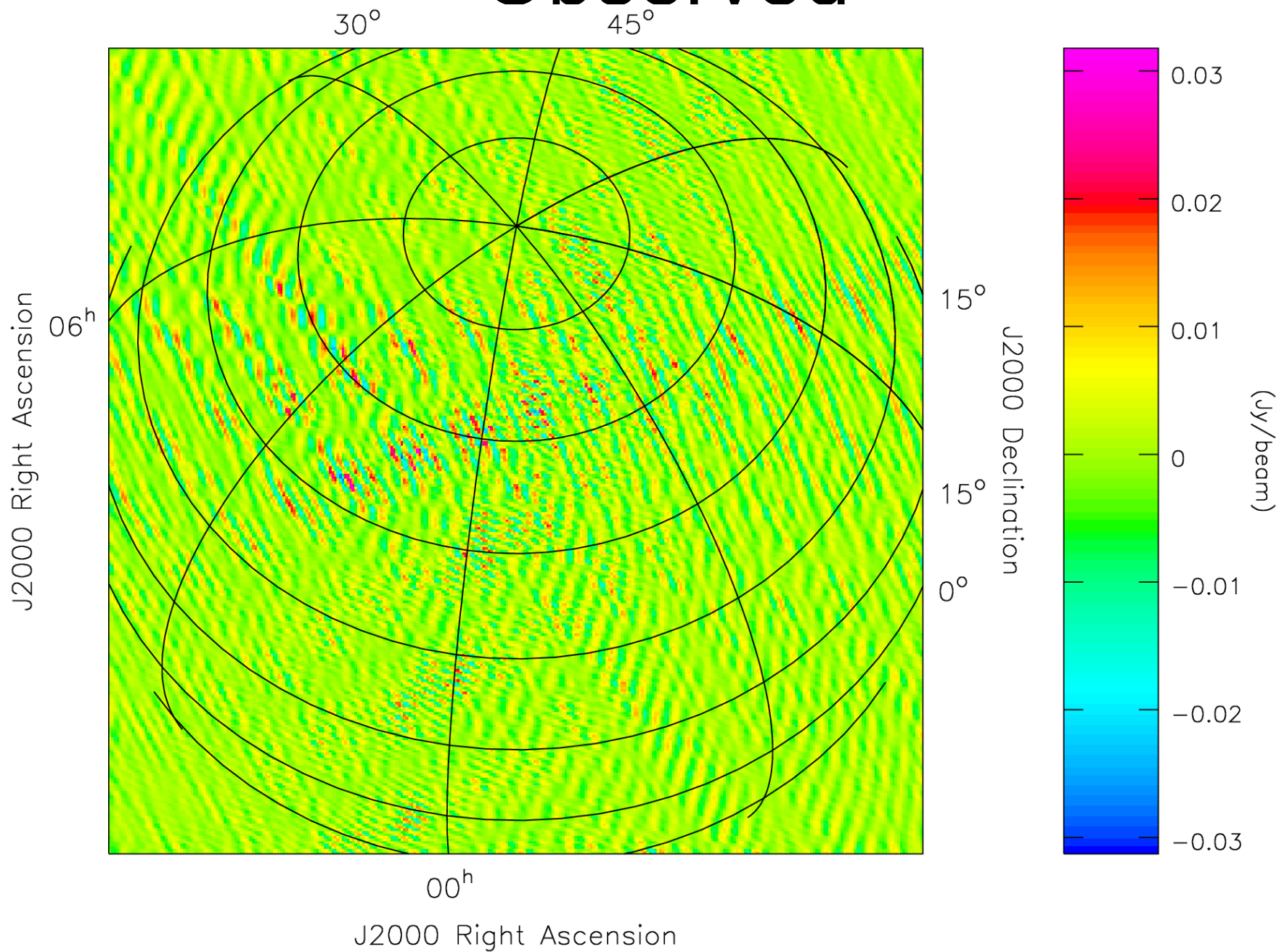
# Pre-processing steps

- Flag stations 2, 3, 4 (24, 12, 6 dipole stations)
- Flag auto-correlations
- Select RFI free band
- Split out single subband (using LofarSBSplit.g)
- We used the 16<sup>th</sup> sub-band (no. 15)

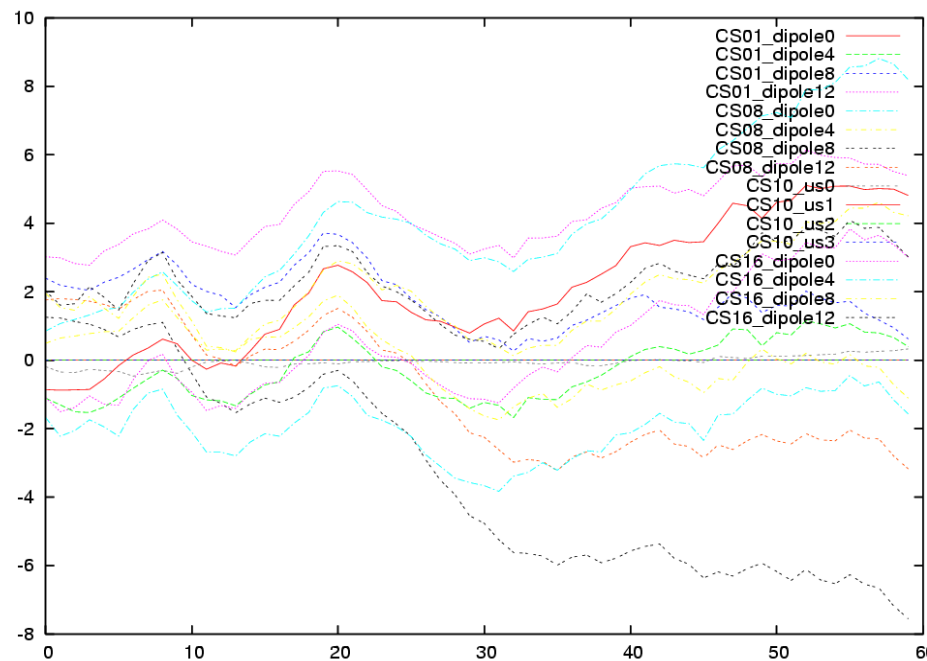
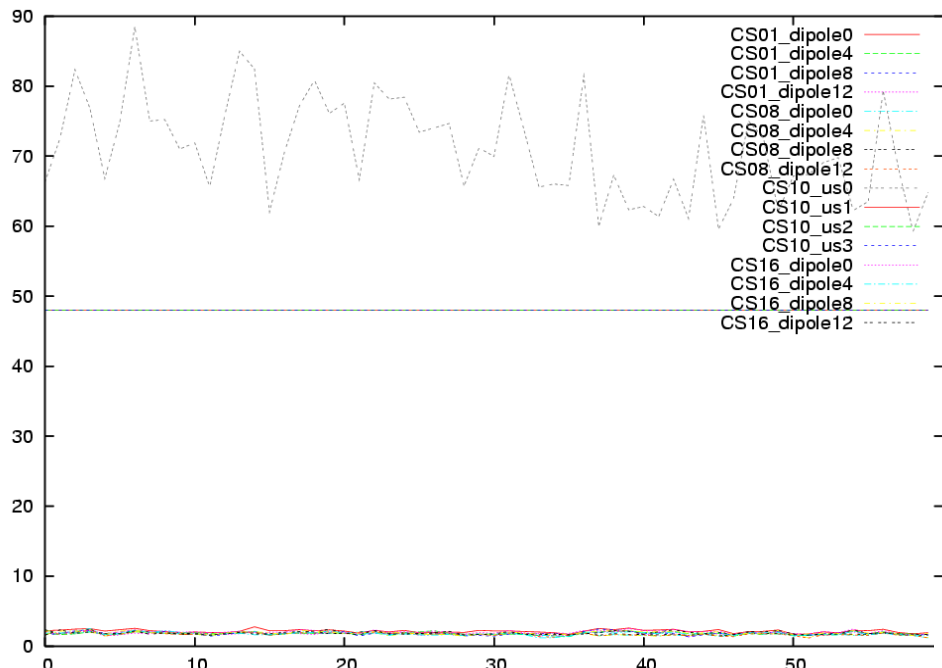
# Self-Calibration

- Sky model: CasA = 0.01, CygA = 0.001
- Initial (complex) gain in direction of CasA and CygA: 1 for dipoles, 48 for CS10
- Solve for the 2 complex gains using inter station baselines only (15 solve iterations)
- Correct, subtract, image using all baselines (inter + intra)

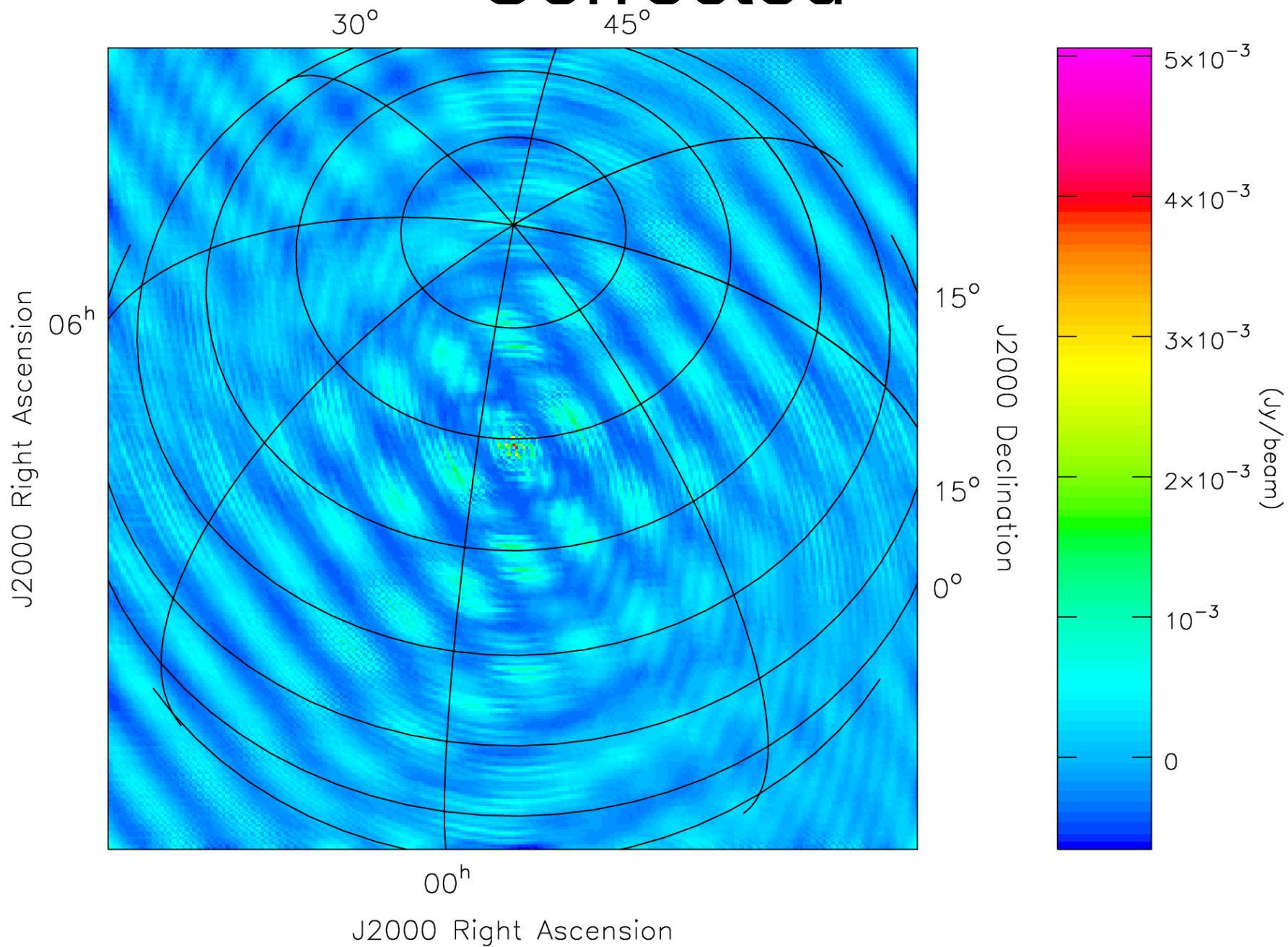
# Observed



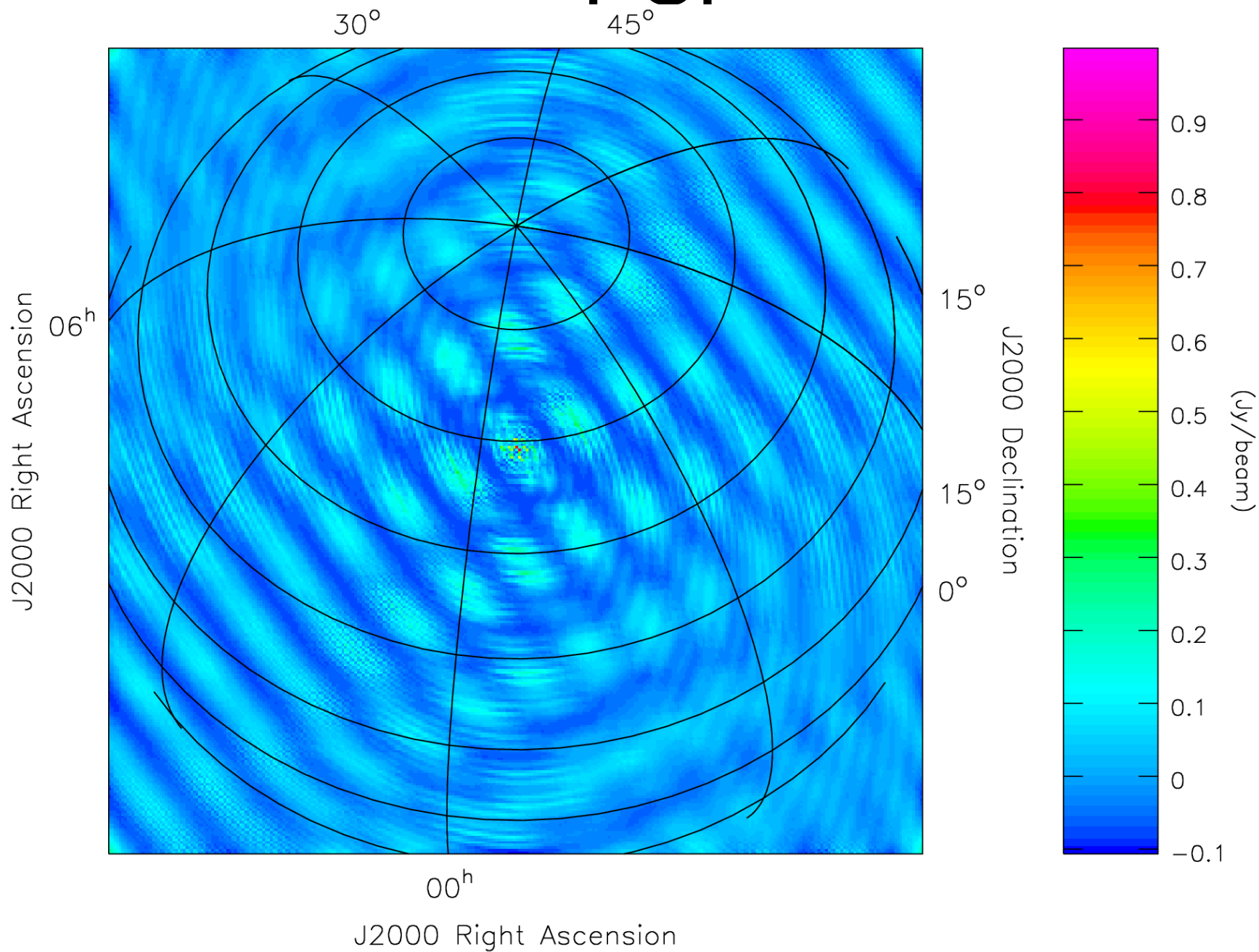
# Gain solution for CasA



# Corrected

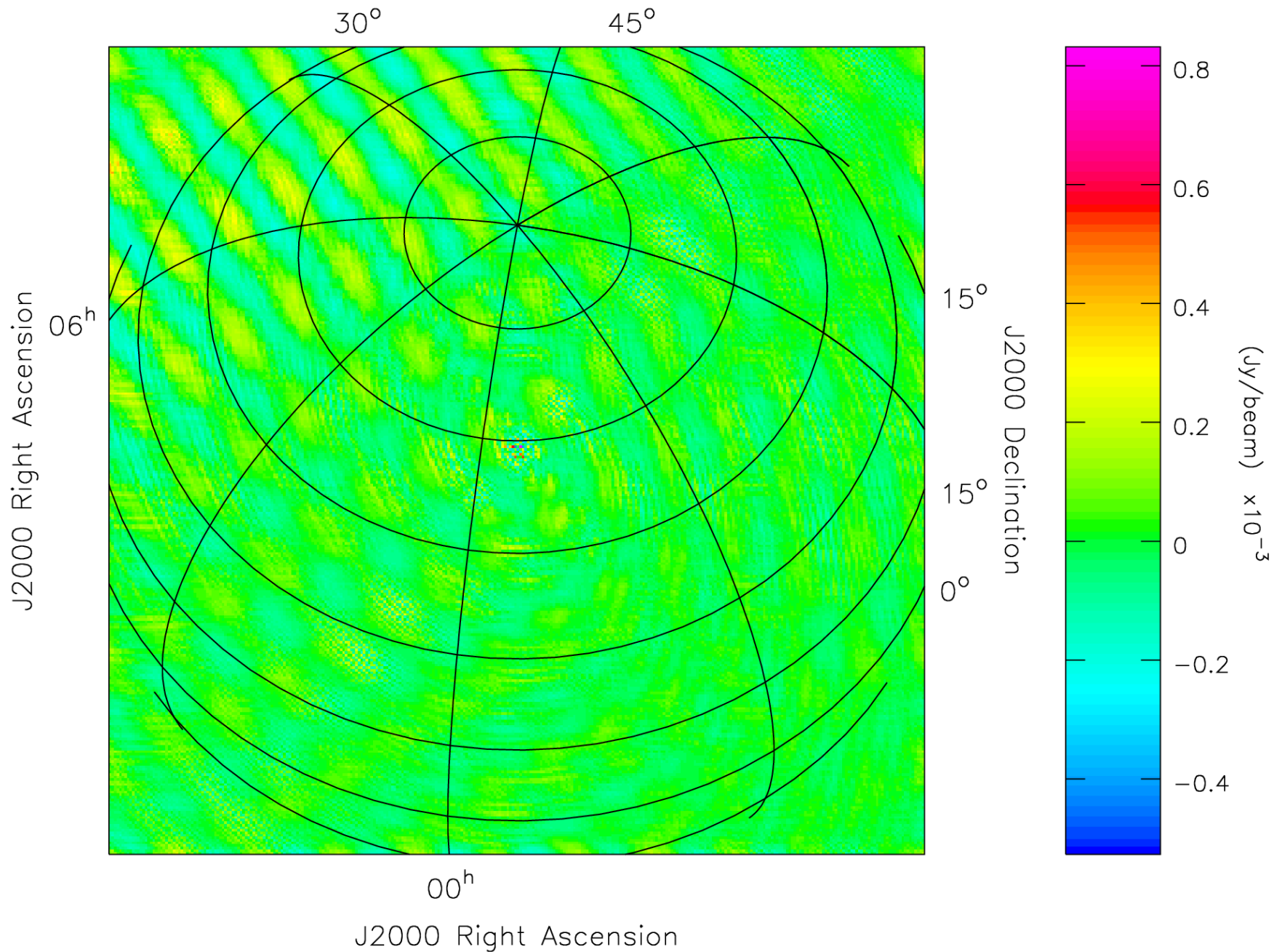


# PSF



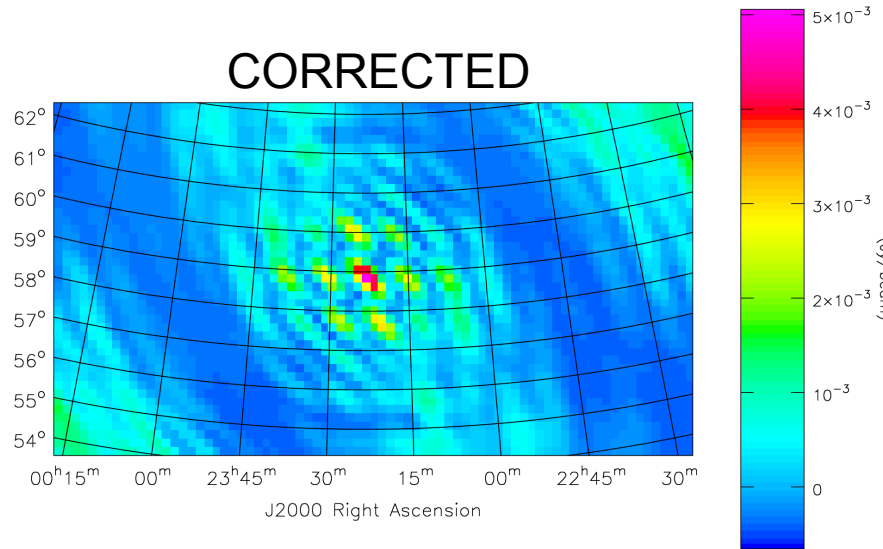


# Subtract + Correct

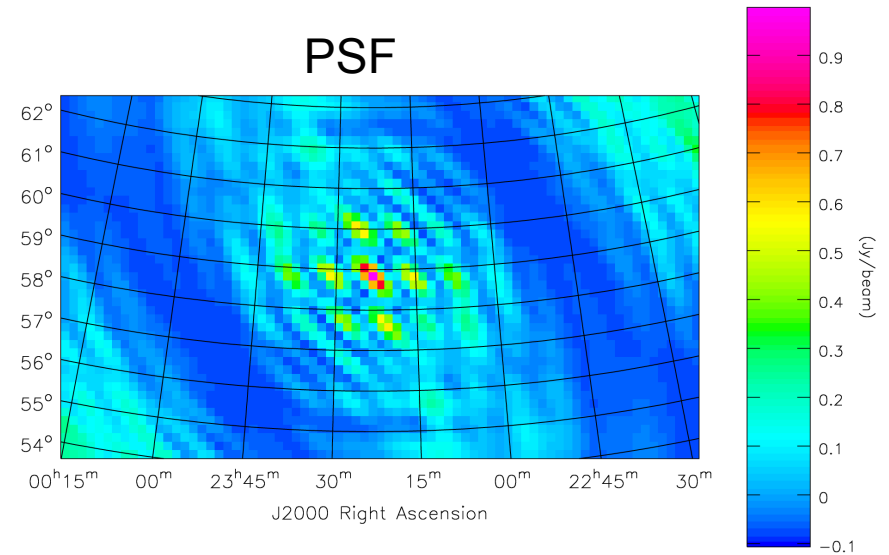


# Zoomed-in

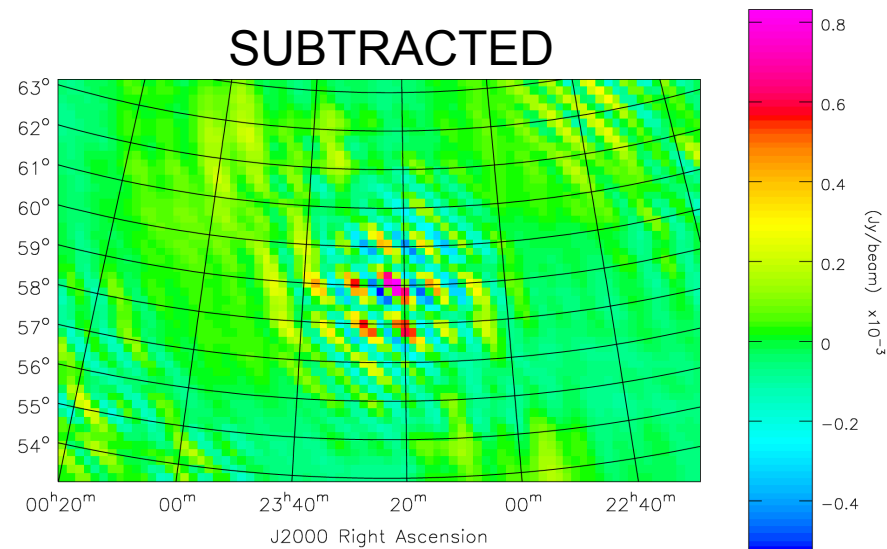
CORRECTED



PSF



SUBTRACTED



# UVW: BBS vs. AIPS++

